

Product Description & Specifications

Product	Dimensions	Agreed Weight	Units/sq.ft	Packaging
Modular	Actual 3" x 2 1/4" x 7 1/2"	3.7 lbs	6.75	500/cube
Closure	Actual 3" x 3" x 7 1/2"	5.6 lbs	4.5	305/pallet
3 1/2" Norman (Utility)	Actual 3 1/2" x 3 1/2" x 11 1/2"	8.2 lbs	3.0	183/pallet
Emperor	Actual 3 1/2" x 3 1/2" x 15 1/2"	10.8 lbs	2.25	160/pallet
Super Emperor	3 1/2" x 7 1/2" x 15 1/2"	23.0 lbs	1.125	64/pallet
Atlas	Actual 5 1/2" x 3 1/2" x 15 1/2"	6" - 15.0 lbs	2.25	100/pallet
	7 1/2" x 3 1/2" x 15 1/2"	8" - 17.8 lbs	2.25	80/pallet
Super Atlas	7 1/2" x 7 1/2" x 15 1/2"	35.7 lbs	1.125	40/pallet
True Pavers	Actual True - 4" x 2 1/4" x 8"	5.3 lbs	4.5	500/cube
	Split - 4" x 1 1/4" x 8"	2.9 lbs	4.5	664/pallet
	4x4 - 4" x 2 1/4" x 4"	2.7 lbs	9.0	768/pallet
	8x8 - 8" x 2 1/4" x 8"	10.8 lbs	2.25	192/pallet
Modular Pavers	Actual 3" x 2 1/4" x 7 1/2"	Modular - 4.7 lbs	4.5	500/cube
	3" x 1 1/4" x 7 1/2"	Splits - 2.3 lbs	4.5	664/pallet
Pool Coping	Actual 3" x 2 1/4" x 9"	5.1 lbs	3/running ft.	384/pallet
	3" x 2 1/4" x 11 1/2"	6.4 lbs	3/running ft.	288/pallet

BRICK MANUFACTURED BY INTERSTATE BRICK MEET OR EXCEED THE REQUIREMENTS ESTABLISHED IN THE FOLLOWING ASTM SPECIFICATIONS:

C216 Facing Brick (solid masonry units made from Clay or Shale).
 C652 Hollow Brick (hollow masonry units made from Clay or Shale).
 C902 Pedestrian and Light Traffic Paving Brick.

WARNING CA PROPOSITION 65

"Cutting or grinding these products will expose you to silica which is known to the State of California to cause cancer and other chemicals which are known to the State of California to cause cancer, birth defects and other reproductive harm."



INTERSTATE BRICK
 9780 South 5200 West
 West Jordan, UT 84088-5625
 Call Toll-Free: (800) 233-8654
 Fax: (801) 280-5220
 www.interstatebrick.com

H.C. MUDDOX*
 4875 Bradshaw Road
 Sacramento, CA 95827-9727
 Call Toll-Free: (800) 776-1244
 Fax: (916) 362-9182
 www.hcmuddox.com

* Contact H.C. Muddox for colors and sizes.

Nothing Else Stacks Up.



Interstate Brick

Commercial Series



Nothing Else Stacks Up...

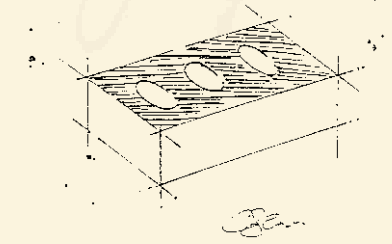
When Interstate Brick Company was formed in 1891, we established one simple goal for our company: to be the best brick manufacturer in America.

Now close to a century of leadership later, the attainment of that goal can be seen in a variety of premier brick products. In fact, our products are being imitated but never duplicated by many other national brick manufacturers.

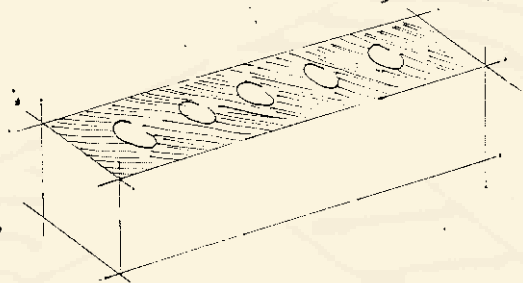
Today, this product superiority has allowed Interstate Brick to grace the most visually sophisticated office buildings, condominium towers, malls, institutions, schools and residential homes from coast to coast.

Which goes to show what a difference one simple goal can make. Simply put, **nothing else stacks up.**

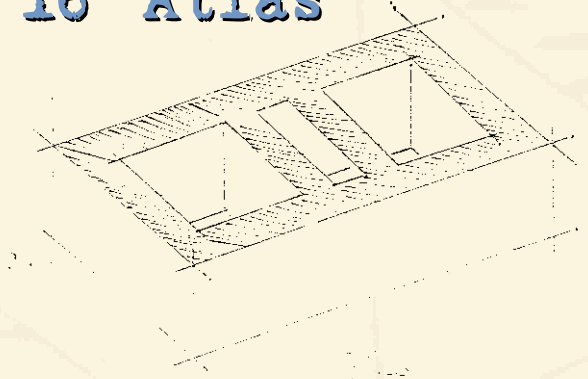
Modular Brick



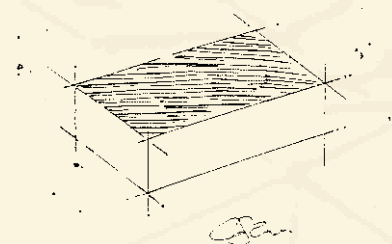
Large Veneer



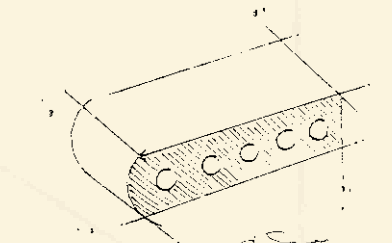
18" Atlas



Pavers



Pool Coping



Baja Brown



Mission



Park Rose



Ironstone



Manhattan Rose



Moroccan Brown



Mountain Red



Midnight Black

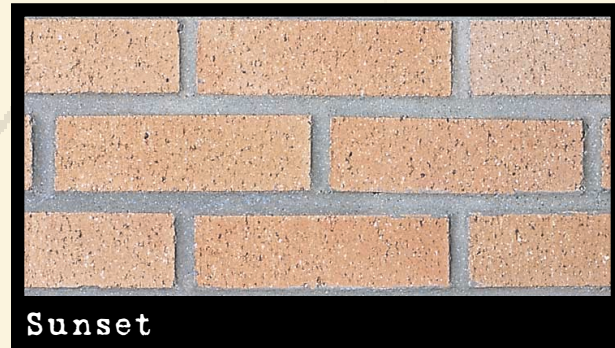


Monterey

***NOTE:** Since color and shade may vary from the printed photos, we suggest you request samples prior to specifying.



Artic White



Sunset



Tumbleweed



Smokey Mountain



Valley Tan



Canyon Rose Matte



Desert Sand



Copperstone



Platinum



Bronzestone

Colors

The spectrum of beautiful colors shown here while not exact reproductions are representative of the fine lines available in many of our brick products. However, final selections should always be made from actual samples.



Arizona Lottery, Phoenix, AZ

Shapes

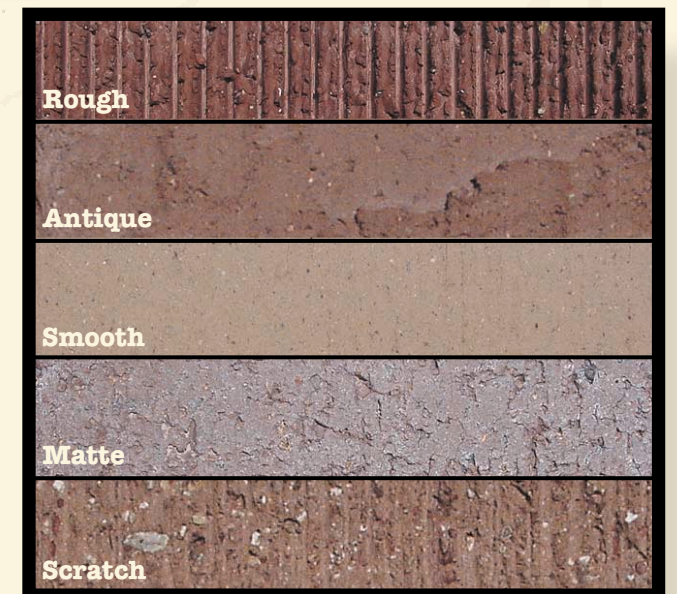
When it comes to shapes, we pride ourselves on our standard and custom work. To maximize your design potential, ask your Interstate Brick representative for assistance.



Galleria (detail), Park City, UT

Textures

Check with your representative for available color texture combinations.



Rough

Antique

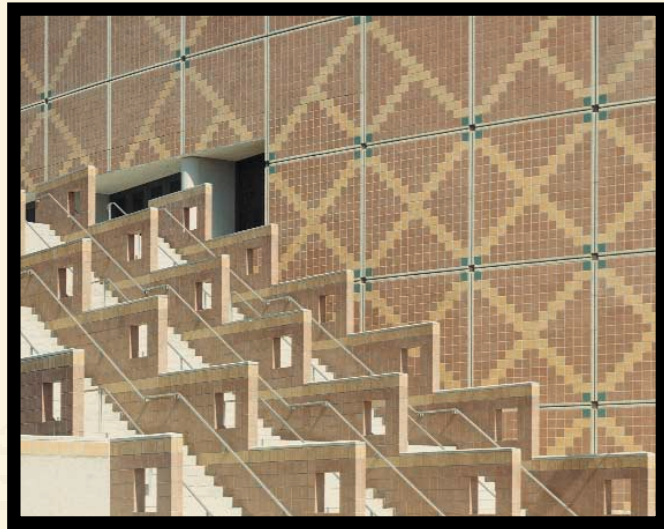
Smooth

Matte

Scratch

Modular Brick

Modular sized brick (3 $\frac{3}{8}$ " x 2 $\frac{1}{4}$ " x 7 $\frac{7}{8}$ ") adds impact and prestige to residential and commercial buildings. For example, it offers a wider range of beautiful colors and textures than our other product lines. And its inherent good looks and versatility exceeds the common notion that a brick is simply a commodity.



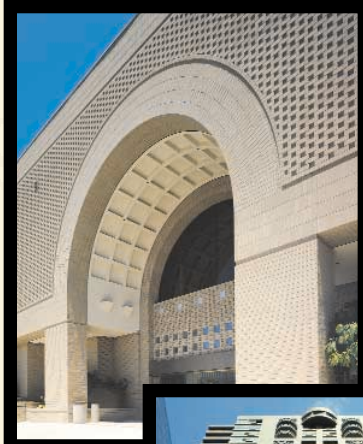
Palace at Auburn Hills, Auburn Hills, MI

Large Veneer

Finally, a veneer brick that makes large projects as economical as they are beautiful.

Since Emperor™ units measure 3 $\frac{3}{8}$ " x 3 $\frac{3}{8}$ " x 15 $\frac{1}{8}$ " their scale is more appealing than an 8 or 12 inch unit. They lay up comparably to a 12 inch unit which saves on labor costs too.

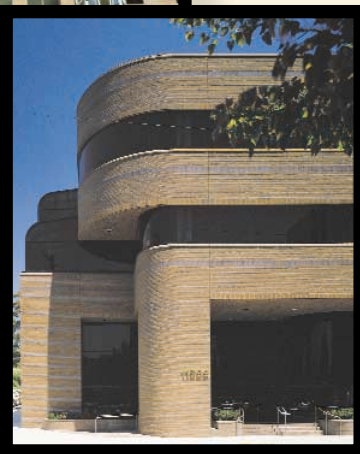
Eight inch squares are also available, as well as a 7 $\frac{7}{8}$ " Super Emperor and 11 $\frac{1}{8}$ " Norman (Utility). Brick this big on looks and bold on functionality adds a dramatic architectural statement to any structure.



Nordstrom, Canoga Park, CA



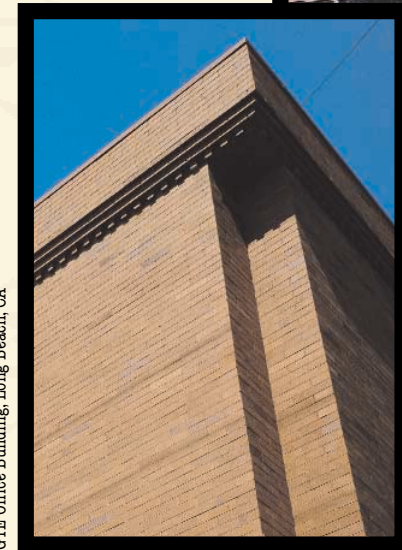
The Cosmopolitan, New York, NY



Salt Air Office Building, Los Angeles, CA

16" Atlas™

Interstate Brick is the industry leader in quality 16" long material. From street smart sophistication to interior style, the two sided finish of 16" Atlas is long on looks. A hollow cored, load bearing brick, 16" Atlas is particularly attractive and cost efficient for office buildings, condominium towers, schools, retail developments, churches, apartments, hotels and institutions.



GTE Office Building, Long Beach, CA



CBS Fox Video Building, Livonia, MI

Pavers/Pool Coping

Interstate Brick pavers and pool coping create a crossroads of design, elegance and beauty. Here an assortment of colors and sizes go beyond mere decoration. They add architectural excitement and eye catching continuity to any indoor or outdoor setting.

Unlike other exterior ground cover, the color is permanent.



Pool Coping