



## HIGGINS BRICK

15920 Pomona Rincon Rd.

Chino Hills, CA 91709

(909) 597-3711

Fax: (909) 597-3026

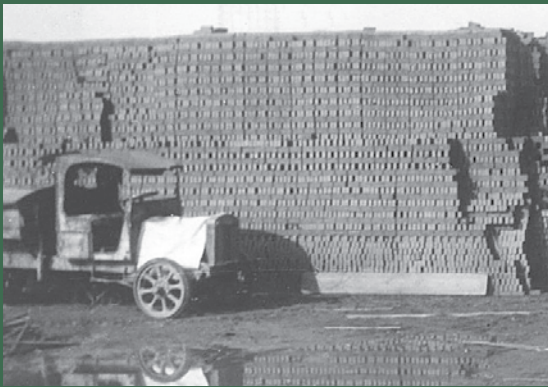
WWW.HIGGINSBRICK.COM



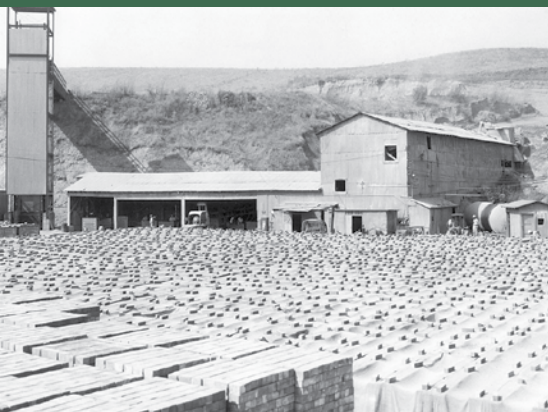
# HIGGINS BRICK

EVERGREEN Veneer





Torrance Plant 1927



Santa Monica Plant 1944



Monterey Park Plant 1950

At Higgins Brick, we are committed to reducing the extraction of natural resources in our brick production. Our goal is to lessen the impact on our environment while saving natural resources for future generations.

Ultimately, everything used to manufacture our brick comes from the earth. Like the early brick of Mesopotamia, our basic ingredients still remain clay and water, fused with fire. A truly "earthy" product, clay brick veneer requires the lowest amount of energy and natural resources per pound of any cladding material.

We have implemented standard procedures for using materials that have been diverted from the waste stream to manufacture our new products. We use less virgin material while applying material-efficient product designs helping us achieve a 90% +/- Total Recycled Content. This reduces waste during manufacturing and allows our natural resources to be used more efficiently through source reduction.

As an industry pioneer in energy and natural gas conservation, Higgins Brick is the only U.S. brick facility using micro-turbines to co-generate its power. This step effectively reduces our carbon footprint by consuming 25% less Natural Gas while producing renewable self sustaining "green" electricity.

While leading the brick industry with product innovations since 1927, the Higgins' family continues to maintain a vision for the future. Taking a proactive role in the preservation of our environment is a responsibility we all share. At Higgins Brick, we are doing our part to minimize our environmental impact while producing great products. Let's work together to insure a clean, "green" environment for all generations to come!









# Inspiration Series



Cumberland



Glacier Bay



Yellowstone

---

*"The richness I achieve comes from Nature, the source of my inspiration."*

Claude Monet

---



Sundance



Rocklin



# Inspiration Series



Haystack



Windamere



Spruce







# Loft Series



Aiden



Macon



Crestline





Astoria



Seneca



Moraga

---

*"Study nature, love nature,  
stay close to nature. It will  
never fail you."*

Frank Lloyd Wright

---





# Specification

Higgins Evergreen veneer is available in our Modular Size (2 1/4 x 7 5/8 x 5/8).

All of our veneer colors are available in matching full size brick and thin pavers (7 5/8 x 3 5/8 x 5/8).

Higgins thin brick veneer and thin brick pavers meet or exceed the requirements of the ASTM C-1088 and C-902, Grade SW, Type TBS.



7 5/8 x 2 1/4 x 5/8



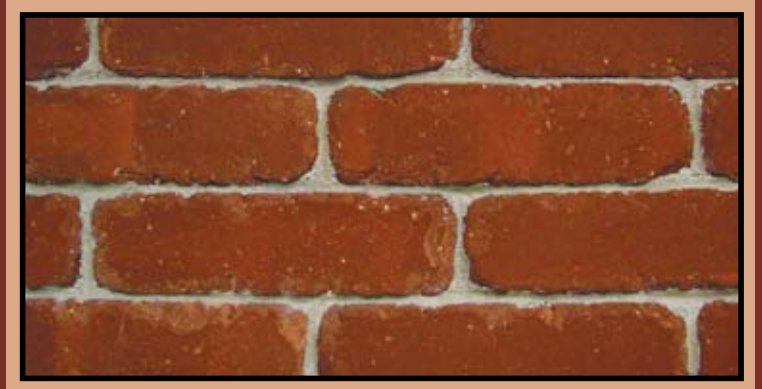
7 5/8 x 3 5/8 x 5/8





# Old Los Angeles Series

Higgins Old Los Angeles Series features our cobbled Standard Size - (8 x 2 1/4 x 5/8), reminiscent of projects we have supplied over the past century.



Westlake



Cabrillo



Catalina