



SALADO

quarry

Natural Stone





■ **Sonoma Blend**  
Random 4", 6", 8", 10"

**Sonoma**

*Saw cut on top and bottom to specific heights with split face and random lengths.*



White ..... 3  
 Gold ..... 4  
 Tan ..... 4  
 Cave ..... 5  
 Blend..... 6  
 Autumn..... 7  
 Cream ..... 7  
 Archaic ..... 8  
 Matera..... 8  
 Red..... 9

**Tuscany**

*Split on all sides; random heights and lengths.*



White ..... 11  
 Red..... 12  
 Hickory..... 12  
 Cream ..... 13  
 Autumn..... 13

**CONTACT**

Phone: 254.793.3355  
 Fax: 254.793.0182  
 Website: saladoquarry.com

*Contents*  
**CONTENTS**

**Chateau**

*Random shapes and sizes.*



Gold ..... 15  
 Brown ..... 16  
 White ..... 16  
 Hickory ..... 17  
 Autumn..... 18





Gold



White



Cream



Cave



Blend



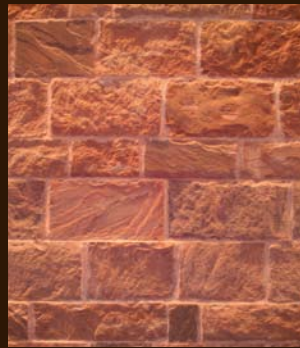
Autumn



Tan



Matera



Red



Archaic



Lueders



Ballinger

*Sonoma*  
**SONOMA**

*Saw cut on top and bottom to specific heights with split face and random lengths. Available in height sizes 2"-16".*



© 2009. All images property of Salado Quarry and cannot be reproduced without permission.

**Sonoma White** ■  
Random 4", 6", 8", 10"





■ Sonoma Gold  
Random 4", 6", 8", 10"

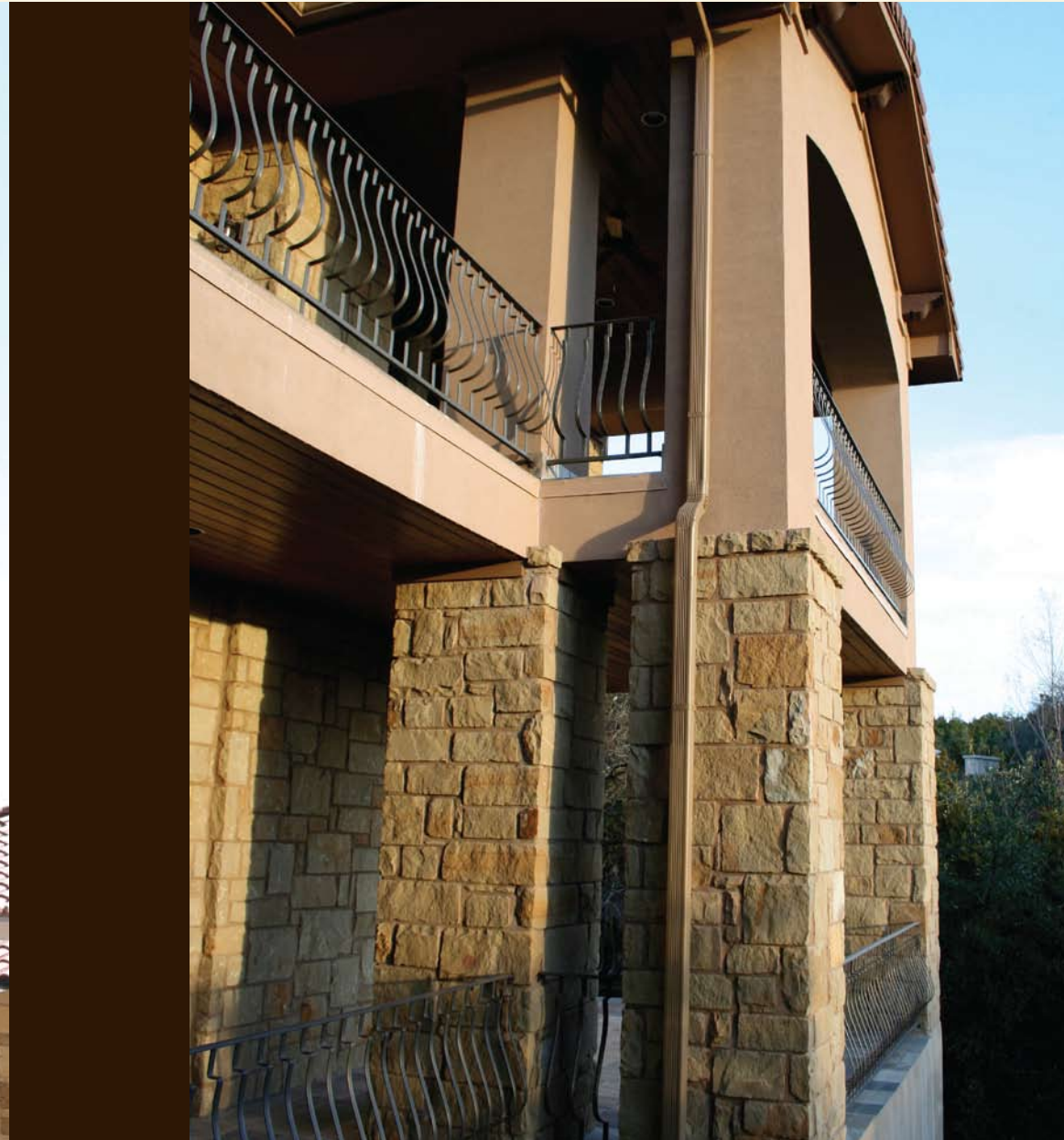
■ Sonoma Tan  
Random 4"-12"

Sonoma Cave ■  
Random 4", 6", 8", 10"





■ **Sonoma Blend**  
Random 4", 6", 8", 10"



**Sonoma Autumn** ■  
Random 4"-12"

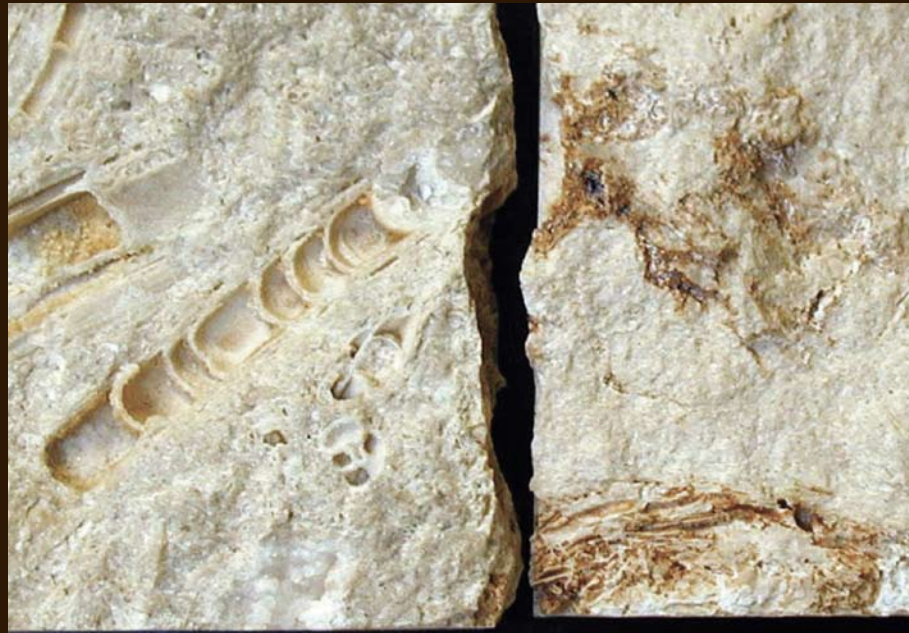


**Sonoma Cream** ■  
8" Courses

© 2009. All images property of Salado Quarry and cannot be reproduced without permission.



A Closer Look at  
*Sonoma Archaic*  
Sonoma Archaic



© 2009. All images property of Salado Quarry and cannot be reproduced without permission.

■ Sonoma Matera  
Random 4", 6", 8"

■ Sonoma Red ■  
6", 8", 12" Courses

■ Sonoma Red ■  
6" Course





Brown



Gold



Red



Cream



White



Hickory



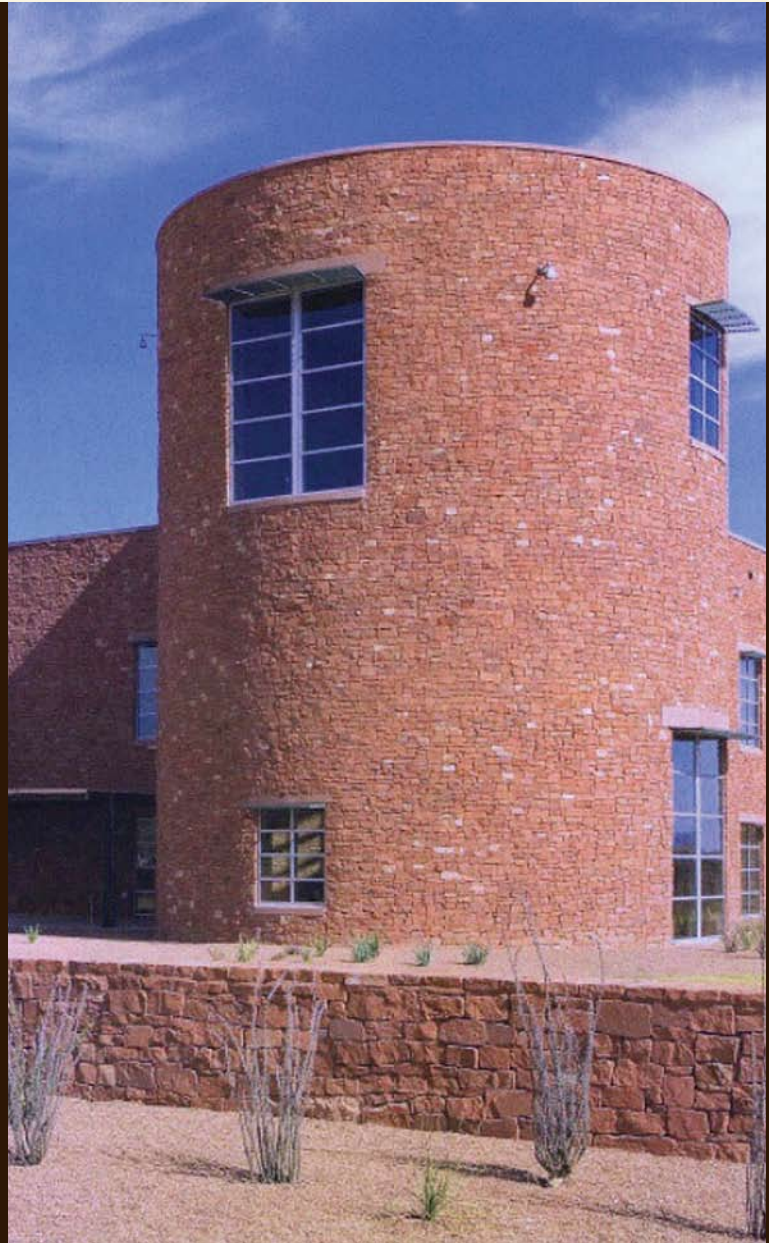
Autumn

*Tuscany*  
**TUSCANY**

*Split on all sides; random heights and lengths.*







■ Tuscan Red



■ Tuscan Hickory



Tuscan Cream ■



Tuscan Autumn ■

© 2009. All images property of Salado Quarry and cannot be reproduced without permission.





White



Brown



Gold



Red



Autumn



Hickory

*Chateau*  
**CHATEAU**

*Random shapes and sizes.*







■ Chateau Brown

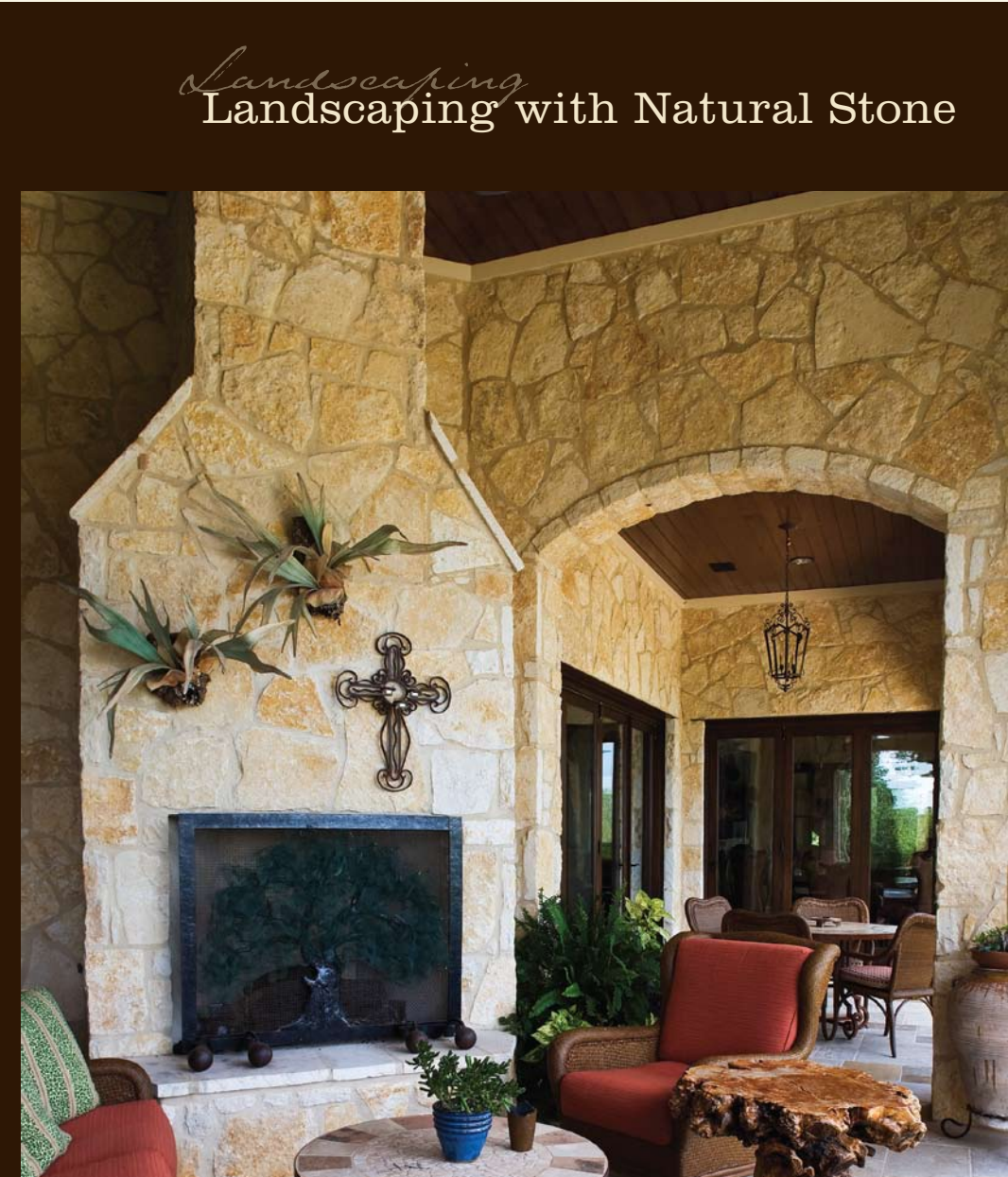


■ Chateau White



Chateau Hickory ■











*Commercial Uses*  
Commercial Uses for Natural Stone



■ Sonoma Tan



■ Tuscan Hickory



■ Sonoma Cream (Top)  
■ Sonoma Gold (Bottom)



■ Chateau Hickory

© 2009. All images property of Salado Quarry and cannot be reproduced without permission.



■ **STONE SPECIFICATIONS**



Block

**Full Size Stone**

3"-5" depth, various heights to 16", random lengths, all styles.



Thin Veneer Corner

**Thin Veneer Corners**

1-1/4" depth, nominal 3" return, various heights to 12", all styles.



Thin Veneer Flat

**Thin Veneer Flats**

1-1/4" depth, various heights to 12", all styles.



Salado Quarry stone meets all specifications for Dimensional Stone under ASTM C-568 and C-616.

Please consult a stone professional for the proper, safe and economical use of natural stone.

**INSTALLATION** ■

**Installing Thin Stone Veneer**

**TOOLS & MATERIALS:**

- Natural Thin Stone Veneer
- Hammer
- Brick trowel
- Scraper
- Stiff brush
- Flat trowel
- Joint tool
- Grout bag
- Masonry brush
- Sand and cement
- Premixed mortar
- Metal lath
- Stone saw

**NOTE:**

These are general instructions for applying Natural Thin Stone Veneer. Processes may vary depending on application. We strongly recommend consulting with an installation professional.

**SURFACE PREPARATION**

Natural Thin Stone Veneer can be applied on nearly any prepared surface, including concrete, plywood, paneling, drywall and even metal.

The surface must be cleaned.

- Painted surfaces must be sandblasted, or otherwise stripped of paint. If all paint is not completely removed, secure a metal lath to the wall, 6" on center.
- For exterior surfaces, install a vapor barrier first, then metal lath.
- For surfaces with frame construction (plywood, drywall or rigid foam), nail metal lath to wall securely, 6" on center. Apply a scratch coat (2 parts washed sand to 1 part Portland cement) to lath. Rake horizontal grooves in the scratch coat. Allow to cure.

**APPLICATION**

1. Arrange stones to desired fit prior to installation.
2. Mix rich mortar at least 5 minutes until consistency is creamy like cake frosting.
3. Clean veneer surfaces. Wash stone completely, if needed. Slightly dampen backside of clean stone, freeing dust and preventing moisture loss from mortar.
4. Using trowel, apply rich mortar approximately 1/8" thick to wall.
5. Apply thin coat of rich mortar on backside of stone, evening surface pits and bumps for a stronger bond.
6. Press stone into wall mortar, rotating slightly and forcing some mortar to squeeze out at edges. Remove excess mortar with trowel, joint tool or brush before it sets.
7. Use a grout bag to fill joints. As mortar stiffens, tool to the desired depth and brush off all excess. Do not let any mortar harden on the face of any stone.
8. Remove excess dirt or film using clean water and stiff brush.
9. Allow project to cure for 4 weeks for inside work.



Nail metal lath to wall securely, 6" on center. Using trowel, apply rich mortar approximately 1/8" thick to wall.



Press stone into wall mortar, rotating slightly and forcing some mortar to squeeze out at edge.



Remove excess mortar with trowel, joint tool or brush before it sets.



Finished Natural Thin Stone Veneer wall.



*Salado Partner Information*



S A L A D O  
— quarry —

p 254.793.3355

f 254.793.0182

w [saladoquarry.com](http://saladoquarry.com)