



Natural
stone
veneers
INTERNATIONAL INC

Design Concepts™
Volume 2

The Beauty of Real Stone
www.nsvi.com

Naturally Green

Natural stone is the oldest, most durable building material known to man. Natural Stone Veneers International's (NSVI Inc.) processing is limited to resizing the material to user-friendly dimensions that are more efficient and economical to transport and install. NSVI's material is cut THIN allowing twice the coverage of traditional stone, greatly reducing environmental impact. Natural stone is 100% usable, can be recycled, and emits no volatile organic compounds.



*“Timeless Beauty”..
Natural Stone has a place in history
where the past is always present.*



Natural Stone Veneers International (NSVI) fabricates natural thin veneer stone for interior and exterior building applications. NSVI has emerged as the leader in the natural stone industry with its diverse natural thin veneer stone products, distribution and marketing.

Design Concepts, Volume II is a compilation of over fifty product lines quarried from around the world. These collections expand and compliment structural dimension with a diversity of color and texture. Many variations on how Natural Stone Veneers can be the crowning achievement to any construction endeavor are depicted in project photos throughout this catalog.

NSVI Collections

- Biltmore Collection . . . 4-7
- Tuscan Collection . . . 8-11
- Mosaic Collection . . . 12-15
- Ledgestone Collection . . . 16-17
- Old World Collection . . . 18-21
- Fieldstone Collection . . . 22-25
- Dimensional Collection . . . 26-29
- Stone Jewel Collection . . . 30-31
- Traditional Collection . . . 32-35
- NSVI Blends . . . 36-37
- Accessories . . . 38
- Applications & Packaging . . . 39

Trade Affiliations:



Canyon Creek



Sydney



Concord

Natural
stone
veneers
INTERNATIONAL INC

Natural Durable Beautiful



Camelback (Buff Hearthstone)

Biltmore Collection



Bradford



Camelback



Canyon Creek



Stockholm

Biltmore is a timeless collection with an historically classic appearance. The collection consists of bedface stone cut in squares and rectangles with colors and textures that represent their unique geologic origin.



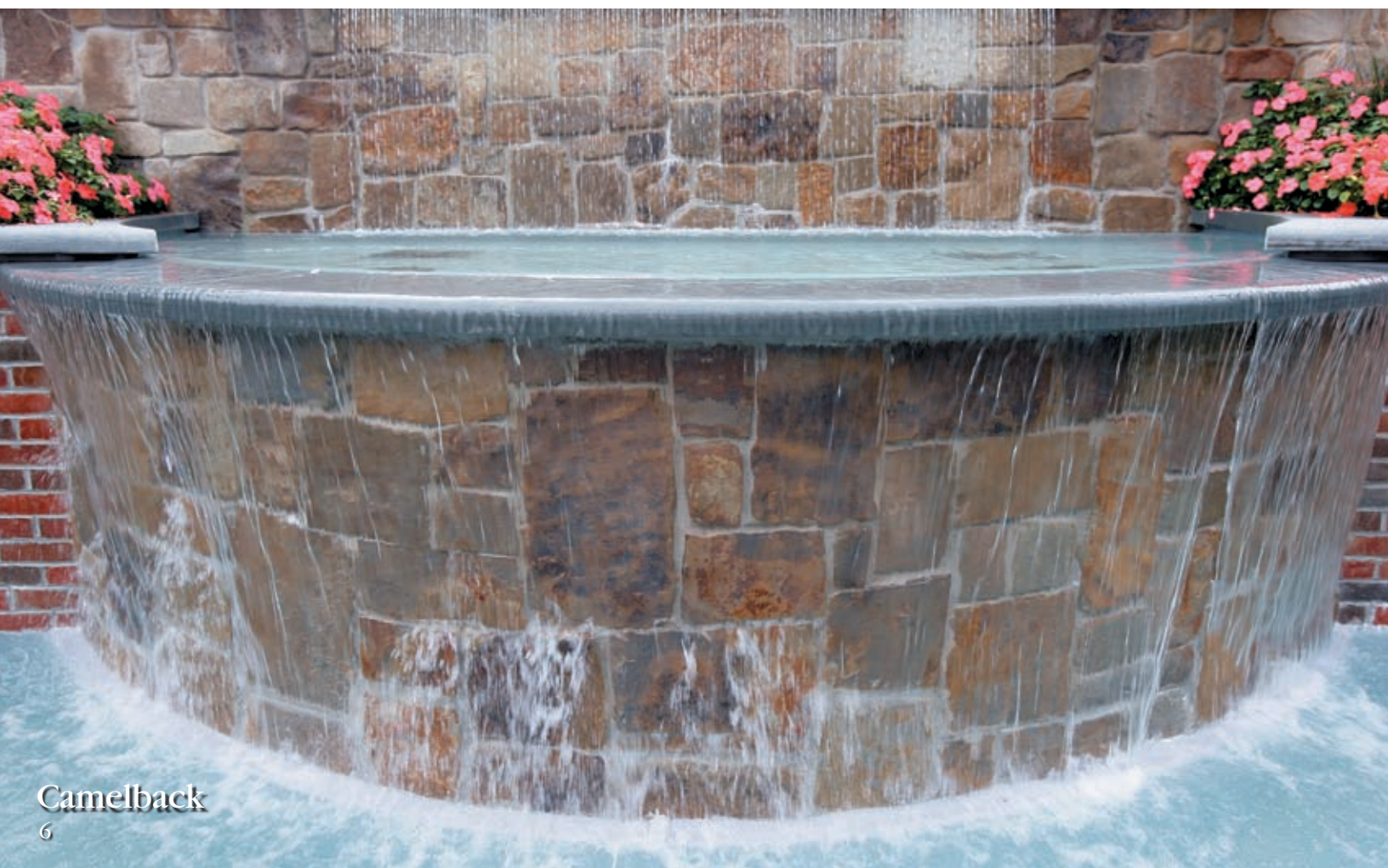
Bradford



Yukon



Canyon Creek



Camelback



Stockholm



Yukon (Windsor Floor)

Tuscan Collection



Palmer



Chardonay



Concord



Keywest



Keywest



Sydney

Steeped in history and enduring charm, the Tuscan Collection draws countless admirers, and is a favorite among those seeking the perfect look for their dream home. The Tuscan Collection is shown using two different mortar joint finishes – a traditional grout finish (left) and an overgrout finish (right).

Opposite Page: Traditional Grout Finish
Righthand Page: Overgrout Finish



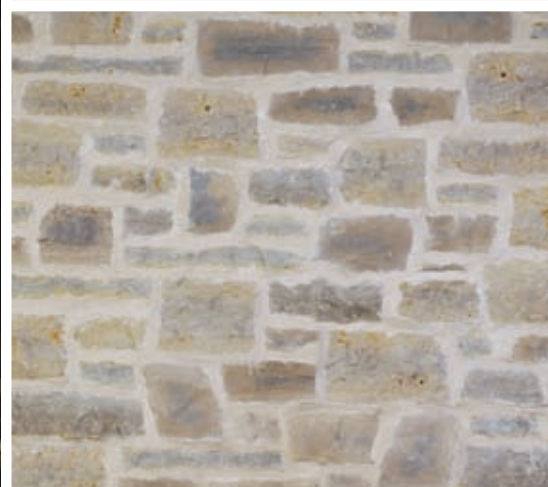
Sydney Overgrout



Palmer Overgrout



Chardonnay Overgrout



Concord Overgrout



Chardonnay



Sydney Overgrout



Keywest Overgrout





Palmer



Concord



Mosaic Collection



Bridgewater



Bluewater



Bridgewater



Buckingham

Rich in texture, the irregular shapes in our Mosaic Collection consist of soothing earthtones, blues and grays. Stones are provided in random sizes up to 16" across.



Litchfield



Farmington





Litchfield



Bluewater



Virginia Ledge stone



Hudson Ledge stone

Ledgestone Collection



Virginia Ledgestone



Virginia Ledgestone



Hudson Ledgestone



Mojave

Virginia Ledgestone was used in the renovation of this 1950s Frank Lloyd Wright style house in Cambridge, Mass., featured on This Old House. The stone was chosen for texture and color; its softly varied earth tones modulate from brown to gray, and include hints of shining silver in its natural color range. The renovation made the most of the home's small lot by incorporating the veneer in the landscaping and bringing it into the interior on both the fireplace and staircase.

AS SEEN ON



Mojave



Old World Collection



Riverton



Glenwood



Glenwood Overgrout



Prescott

The Old World Collection yields a rustic feathered finish. It lends a solid and grounded feel while utilizing a rhythmic, flowing pattern to add softness yet interest to the finished project.



Santa Cruz



Riverton



Prescott



Glenwood



Santa Cruz (Rockface Sill)





Fieldstone Collection



Cobblestone



Cobblestone



New England Fieldstone



Aspen



Northpoint



Split Fieldstone

Naturally rough-hewn fieldstone is collected from its original geological deposits and transposed to its new architectural element.



Cobblestone



Split Fieldstone



Dimensional Collection



Cambria



Carleton



Cedar Creek



Pine Creek



Chadwick

The Dimensional Collection consists entirely of horizontal material incorporating specific heights to achieve an orderly, formal appearance. Stone heights range from 2" - 13-1/4".



Hampton



Lakewood



Madison



Olympia



Pine Creek



San Lucas



Santa Barbara



Sutton



Woodbury



Santa Barbara



Pine Creek



Chadwick





Stone Jewel Collection

Stone Jewel is a dimensional interior and exterior product. It can be installed both vertically and horizontally. Its versatility can be seen on finished job photos shown on pages 7, 30 and 31.



Kingston



Windsor





Cordova/Santa Cruz Blend (Buff Hearthstone)

Traditional Collection



Westminster



Belmont



Chandler

Natural stone offers time-tested durability and timeless beauty. The fireplace niche shown at left creates an architectural element by utilizing natural thin veneer corners and flats along with the combination of two product lines to complete this traditional appearance.



Columbia



Cordova



Fairmont



Sonoma



Westminster





Westminster



Columbia

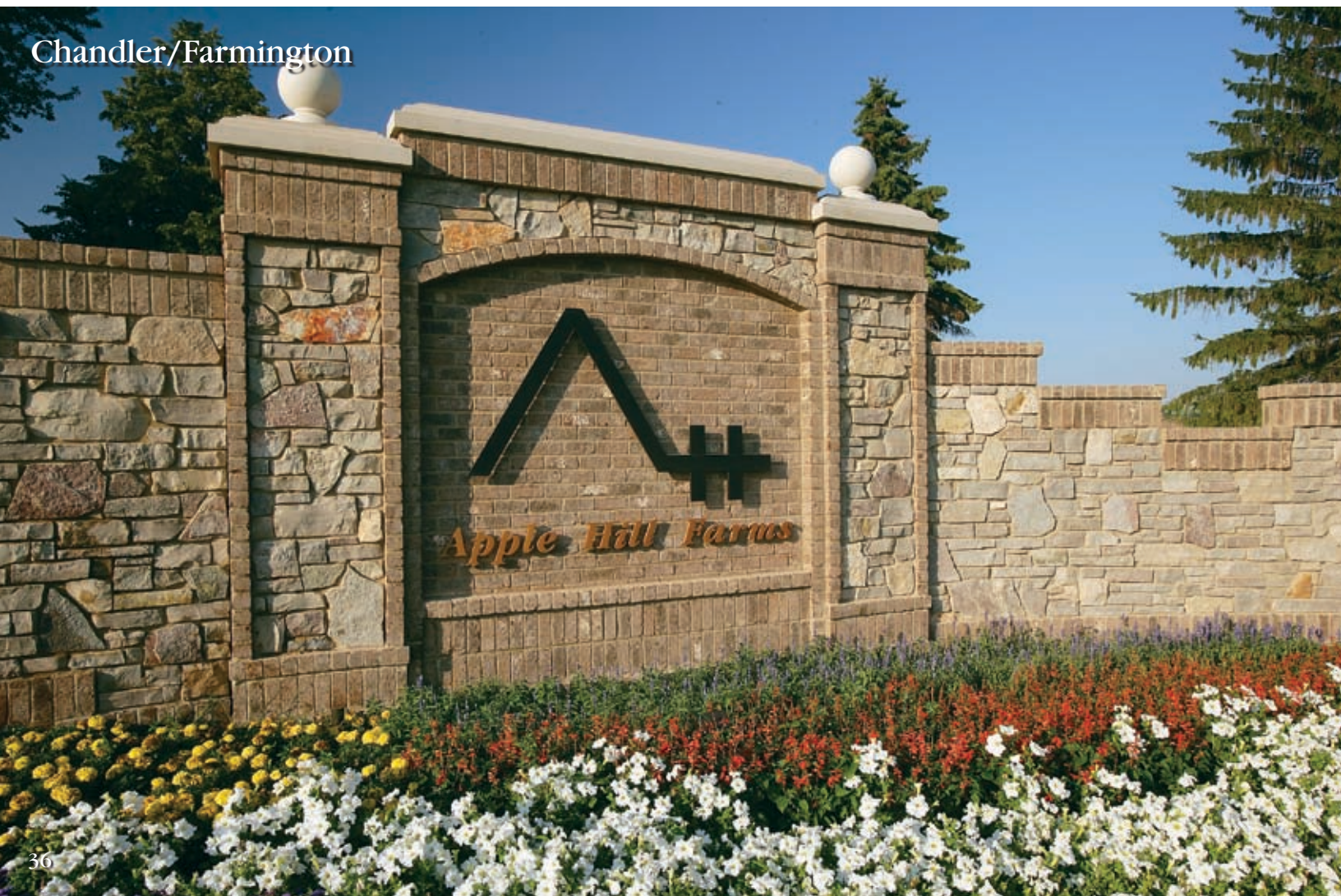
NSVI Blends

Blending product lines is a great way to bring individuality to a project. From traditional design elegance to contemporary style, the enduring beauty of our natural stone blends and accents perfectly—inside and out. The unique properties of our natural stone veneers allow them to be the ideal design concept for your architectural application. Color, texture and durability of real stone without the weight... no extra footings necessary.



Virginia Ledge stone/Sydney

Chandler/Farmington







Carleton

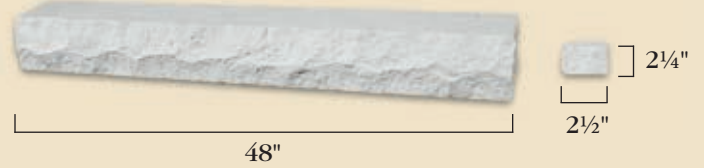
Sills, Hearthstones, Trimstones and Keystones add the architectural details to outline any project.



Olympia

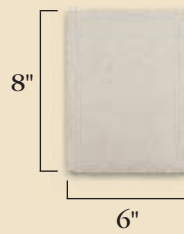
Indiana Rock Grey

Rockface Sill

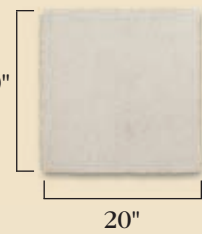


Cream Accessories

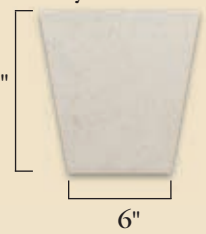
Trimstone



Hearthstone



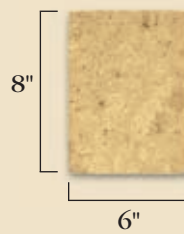
Keystone



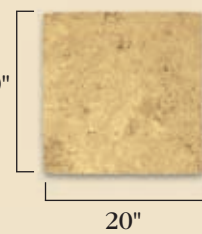
1" thickness for all.

Golden Accessories

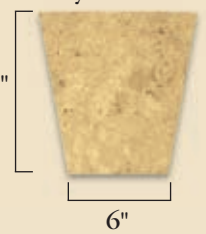
Trimstone



Hearthstone



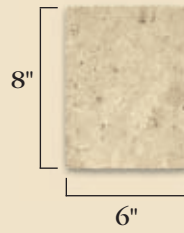
Keystone



1" thickness for all.

Buff Accessories

Trimstone



Hearthstone



Keystone

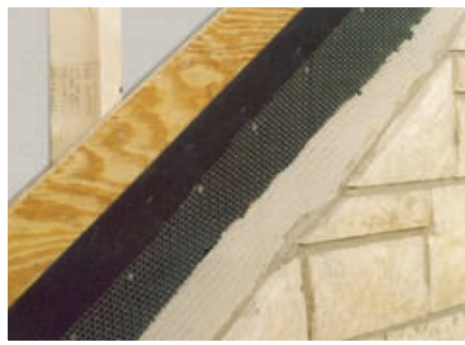


1" thickness for all.

Accessory Packaging

- Indiana Rock Grey Sill 80 per crate
- Hearthstones 30 per crate
- Trimstones 20 per box
- Keystones 4 per box

Applications & Packaging



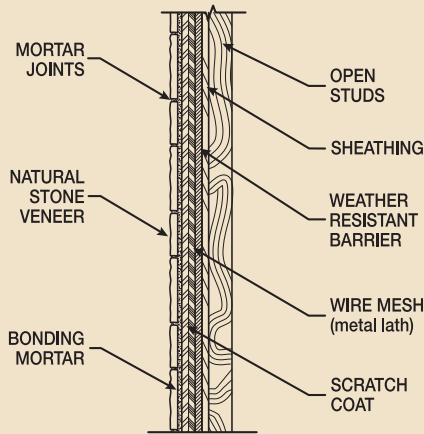
Flat and Corner Packaging

Flats

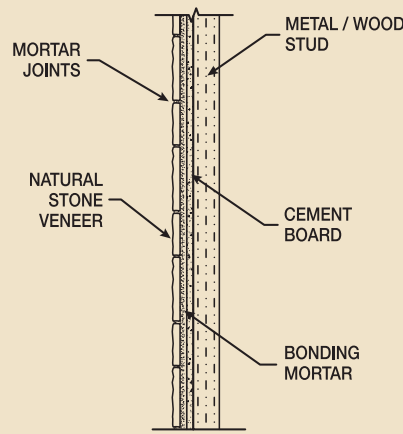
10 Sq. Ft. per Box (approx)
 180 Sq. Ft. per Crate (approx)
**Olympia is packaged
 165 Sq. Ft. per Crate*

Corners

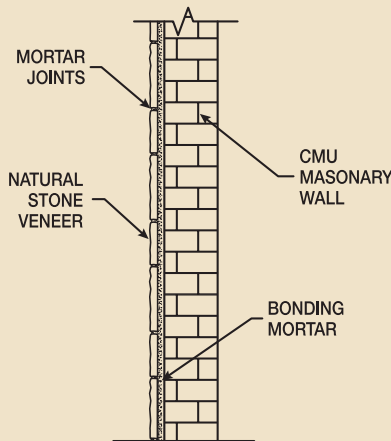
10 Lineal Feet per Box (approx)
 100 Lineal Feet per Crate (approx)



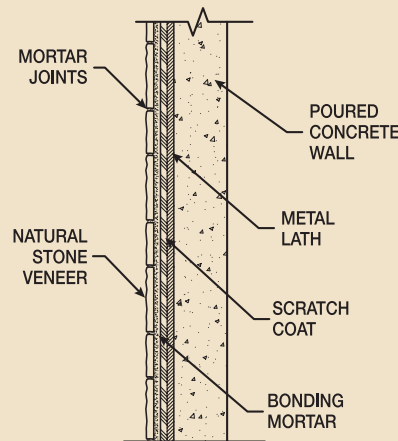
OPEN STUD WALL



CEMENT BOARD INTERIOR ONLY



CMU / MASONRY WALL



POURED CONCRETE WALL

- LedgeStone Collection is packaged for tight fit installation.
- All other collections packaged using a 1/2" mortar joint.
- NSVI recommends a thin set mortar meeting ANSI 118.4 on any exterior dry stack installation.
- Images shown in this catalog are intended to be as accurate as depictions of color and texture can be on the printed page. Because NSVI is a natural stone product, shades may vary.
- For best results of color and texture, work from as many packages as possible.

Color, Texture and Durability of Real Stone Without the Weight



Canyon Creek

Natural
stone
veneers
INTERNATIONAL INC

P.O. Box 347, Fond du Lac, WI 54936-0347
Toll Free: 877-923-2800 • Fax: 920-923-3800

www.nsvi.com